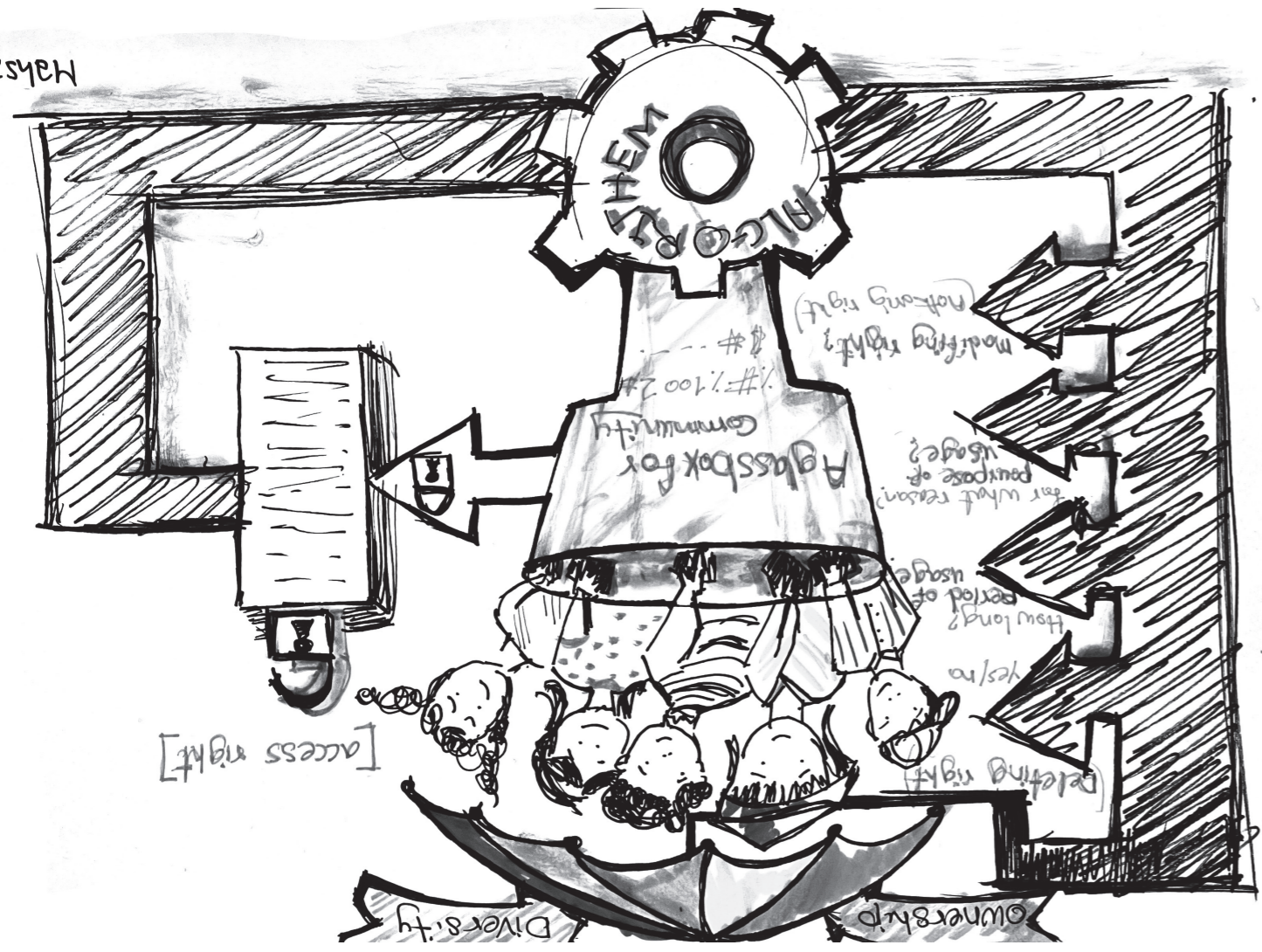
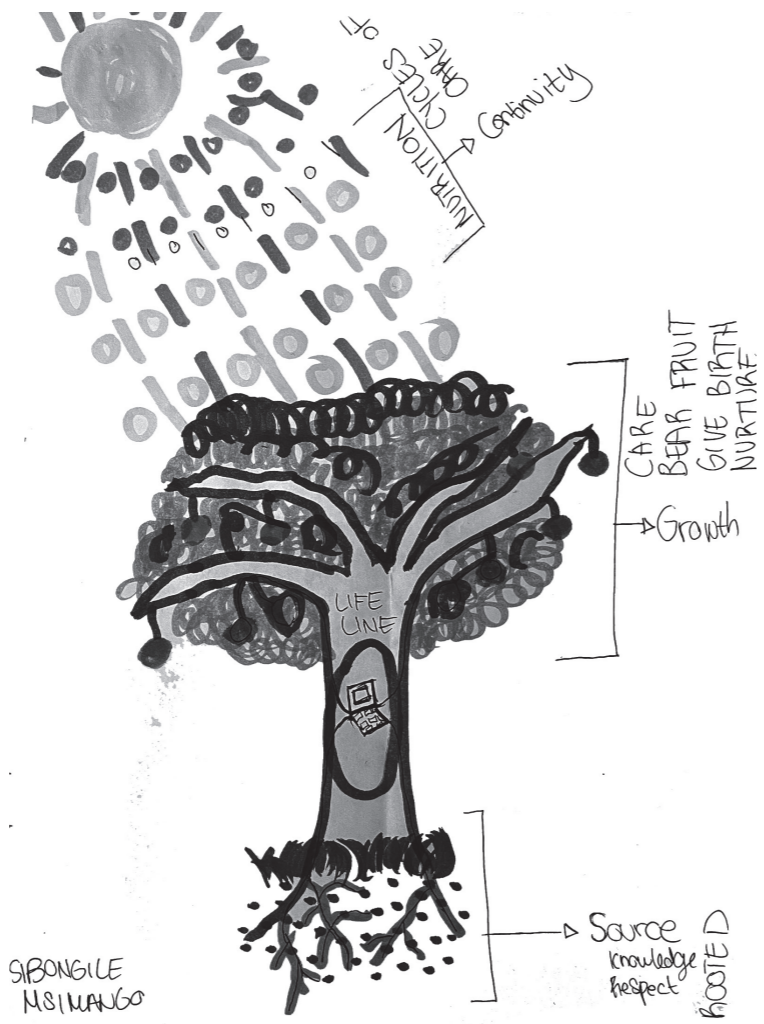
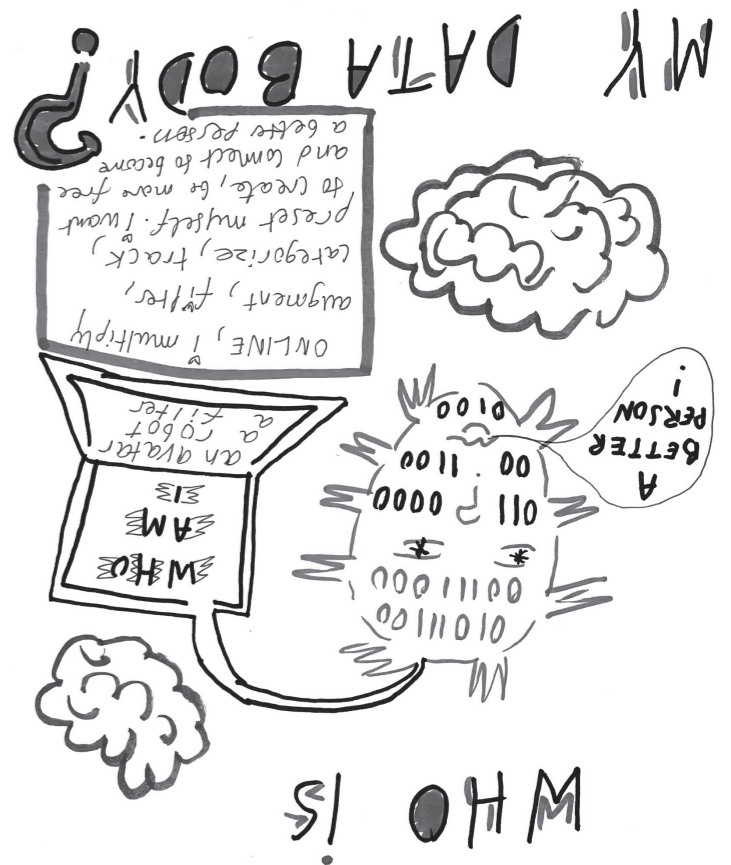
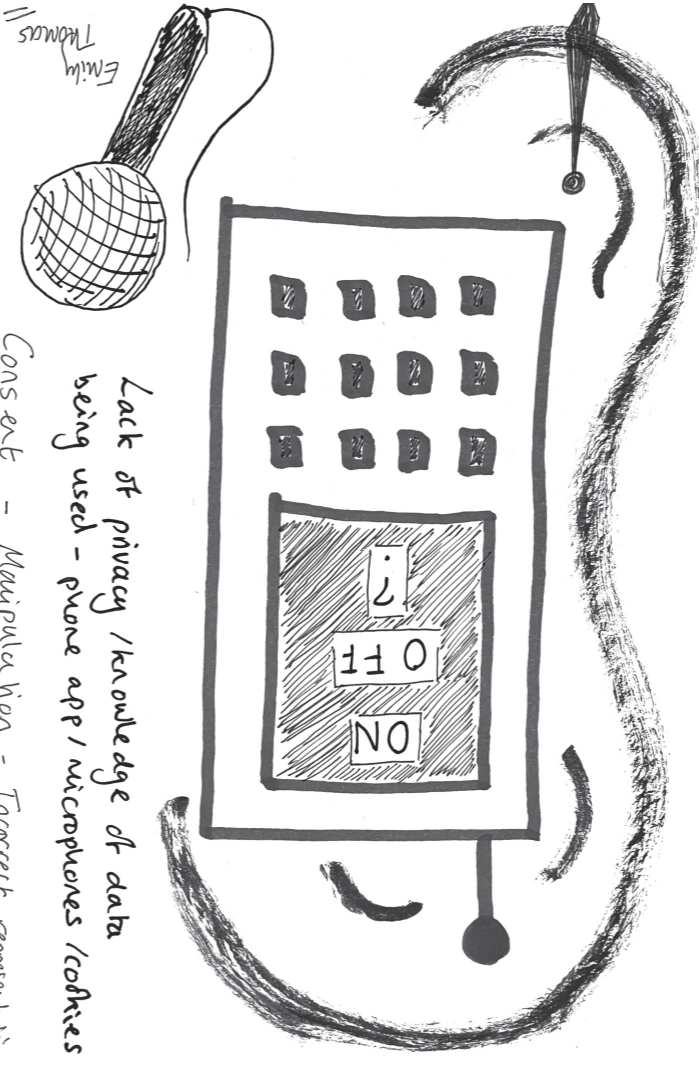


Halsas



Iterative Process of: refining Data collection / asking for purpose of usage /



SIBONGILE NSIMANGO

The Intersectional AI Toolkit argues that anyone should be able to understand what AI is and help shape what AI ought to be. It gathers ideas, ethics, and tactics to build more ethical, equitable tech—showing how already established queer, anti-racist, anti-ableist, neurodiverse, feminist communities contribute necessary perspectives to reshaping the digital systems that affect us all.

This issue was created 28 Jan 23 by workshop participants at Our Data Bodies, organized by Petja Ivanova and Annika Hass, as part of Transmediale Vorpole at Halbsister Gallery in Berlin. These publications are supported by the Akademie der Künste, Berlin in the context of AI Anarchies funded by the Commissioner for Culture and the Media (BKM). See more issues at...

INTERSECTIONALAI.COM



# intersectional AI toolkit

data bodies

SHOULD I USE AI TO CREATE A DIFFERENTLY ABLED PERSON AS MY DEPUTY?