

# intersectional AI toolkit

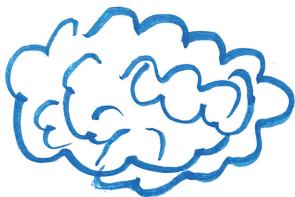
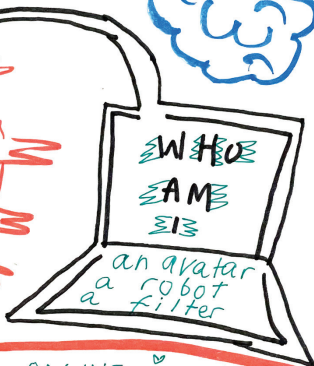
data  
bodies

SHOULD I  
USE A  
TO 2  
CREATE  
AS  
MY DEPUTY  
DIFFERENTLY ABLED  
&

# WHO IS



A  
BETTER  
PERSON  
!



ONLINE, I multiply  
augment, filter,  
categorize, track,  
preset myself. I want  
to create, be more free  
and connect to become  
a better person.

# MY DATA BODY?



Lack of privacy / knowledge of data  
being used - phone app / microphones / cookies

Consent - Manipulation - Incorrect representation

Emily  
Thomas  
==

Iterative Process of: refining Data collection / asking for purpose of usage.



Diversity

[access right]



Mahsa

What You REALLY  
Want to Know  
ABOUT ME?

agreement

WHERE ALL  
THAT INFORMATION  
GOES?????





of  
cycles  
cycles  
of  
NUTRITION  
→ Continuity



CARE  
BEAR FRUIT  
GIVE BIRTH  
NURTURE

→ Growth

SIBONGILE  
MSIMANGO

→ Source  
knowledge  
respect  
ROOTED

The Intersectional AI Toolkit argues that anyone should be able to understand what AI is and help shape what AI ought to be. It gathers ideas, ethics, and tactics to build more ethical, equitable tech—showing how already established queer, anti-racist, anti-ableist, neurodiverse, feminist communities contribute necessary perspectives to reshaping the digital systems that affect us all.

This issue was created 28 Jan 23 by workshop participants at Our Data Bodies, organized by Petja Ivanova and Annika Hass, as part of Transmediale Vorspile at Halbsister Gallery in Berlin. These publications are supported by the Akademie der Künste, Berlin in the context of AI Anarchies funded by the Commissioner for Culture and the Media (BKM). See more issues at...

INTERSECTIONALAI.COM

